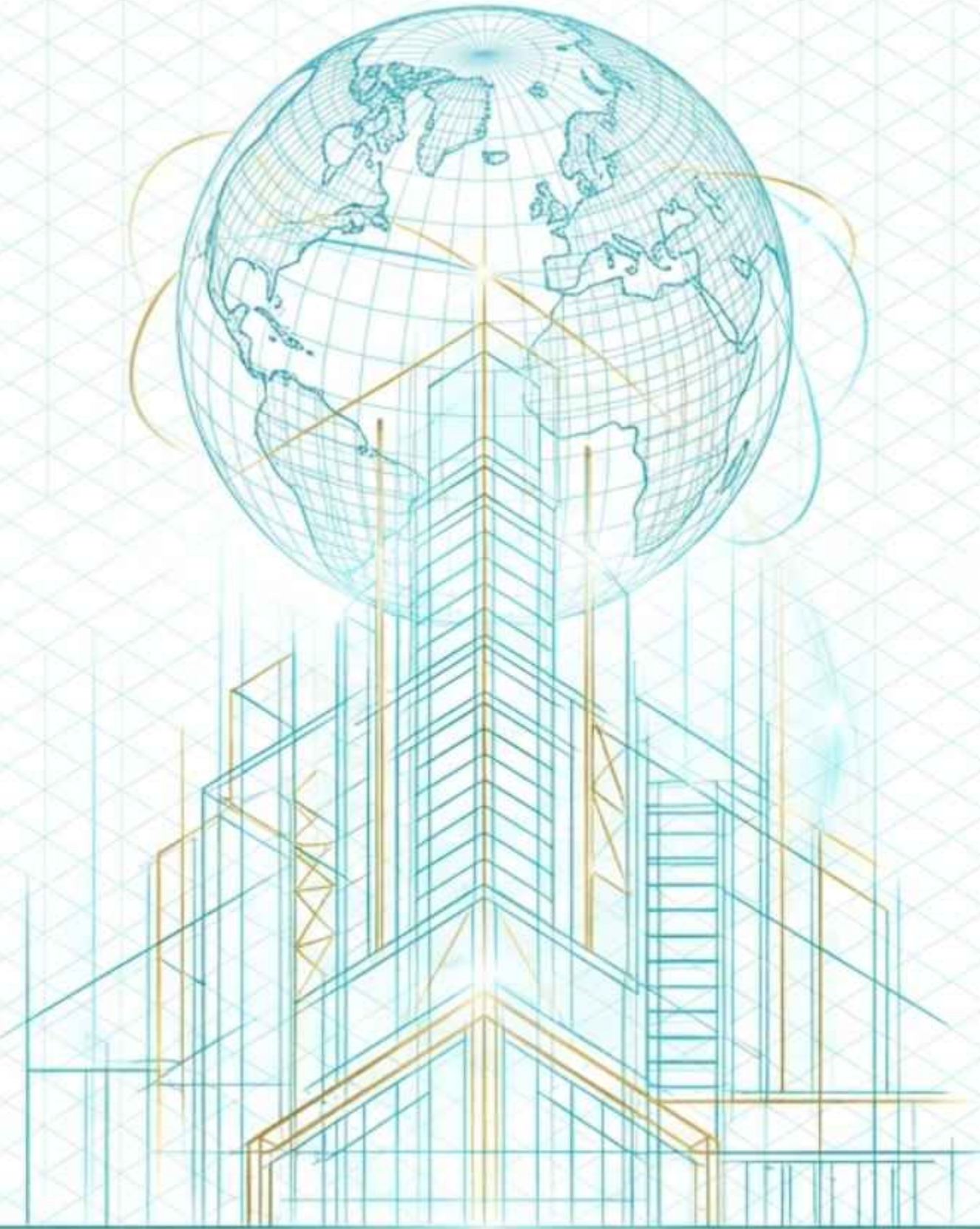


The Indian Entity Blueprint

Strategic IP Protection &
Royalty Optimization
for U.S. Startups



Constructing a Profitable Indian Market Entry



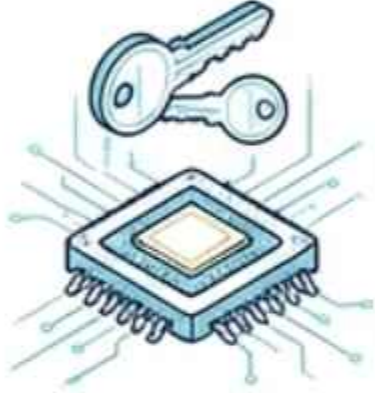
The Foundation Matrix: Selecting the Right Corporate Entity



	Private Limited Company	Limited Liability Partnership (LLP)	One Person Company (OPC)
Liability Protection	Strict limited liability (shields personal assets).	Limited liability (hybrid model).	Limited liability (single owner).
U.S. Investment Suitability	Highest (Standard for VC/FDI).	Moderate (Complex FDI rules).	Low (Cannot have foreign corporate ownership).
Scalability	Unlimited scalability.	Moderate (Prioritizes partnership dynamics).	Restricted by turnover caps.
Regulatory Burden	High (Requires rigorous compliance).	Low (Flexible operational structure).	Moderate.

The Incorporation Architecture: Streamlining MCA Registration

01



Digital Authentication

Obtain Digital Signature Certificate (DSC) and Director Identification Number (DIN) for electronic filing.

02



Core Documentation

Draft and verify the Memorandum of Association (MoA) and Articles of Association (AoA) alongside proof of registered office.

03



The SPICe+ Gateway

Utilize the Ministry of Corporate Affairs (MCA) integrated SPICe+ form. This single point of entry consolidates name approval, incorporation, and tax registrations.

04



Tax Identification

Automatic generation of the Permanent Account Number (PAN) and Tax Deduction and Collection Account Number (TAN).

Compliance Matrix: Post-Incorporation Non-Negotiables

Federal & Financial



Foreign Direct Investment (FDI) Policy Adherence (sector-specific caps).



Reserve Bank of India (RBI) Guidelines Compliance.



Certificate of Incorporation Validation.

Local & Operational



Labor Law Certifications.

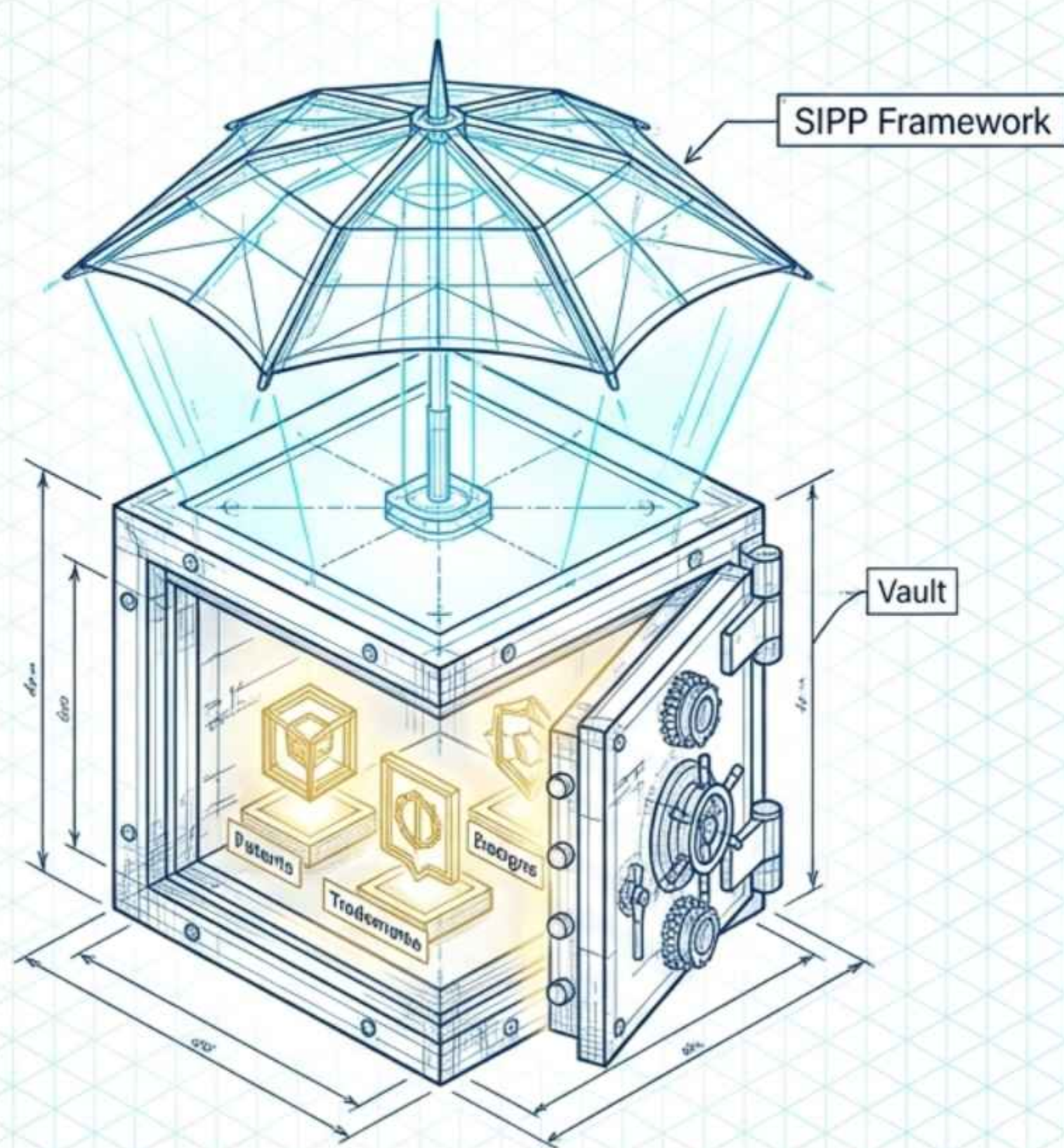


Environmental Clearances.



Industry-Specific Licenses and Approvals.

Asset Protection: Securing the IP Vault



Intellectual Property is the most critical asset for a tech-driven U.S. startup.

Entering India requires an airtight legal holding structure to prevent unauthorized use and neutralize competitive threats.

The SIPP Advantage

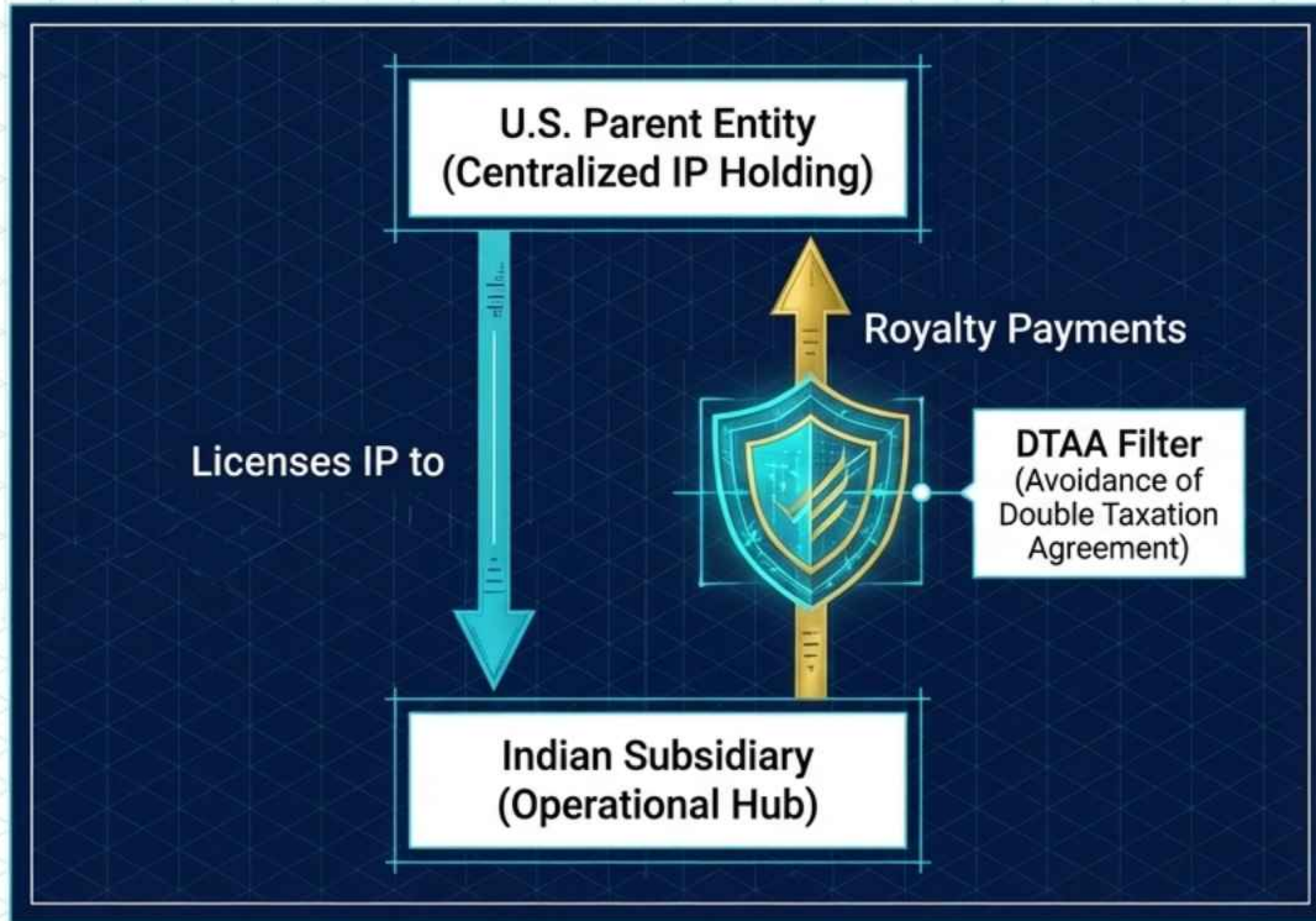
The Scheme for Facilitating Start-Ups Intellectual Property Protection (SIPP) provides a dedicated, fast-tracked pathway for IP registration and cost-effective enforcement utilizing local IP counsel.

Strategic IP Arbitrage: The 80% Advantage



Proper IP strategy transcends legal protection—it is a major financial lever. Under the SIPP framework, recognized startups receive an 80% rebate on patent filings, delivering immediate and substantial capital savings.

Royalty Optimization: The Dual-Holding Mechanism



The Mechanism

Centralizing intangible assets in the U.S. while licensing to an Indian operational subsidiary enables optimized royalty extraction.

The Benefit

Structuring payments through the U.S.-India DTAA minimizes withholding taxes, neutralizing double taxation and maximizing repatriated profit.

The Catalyst: Leveraging 'Startup India' Incentives



Tax Exemption

Section 80 IAC grants full tax exemptions for 3 consecutive financial years. Angel Tax is entirely abolished.



Compliance Autonomy

Self-certification allowed for 6 key labor laws and 3 environmental laws via online portals.



Capital Access

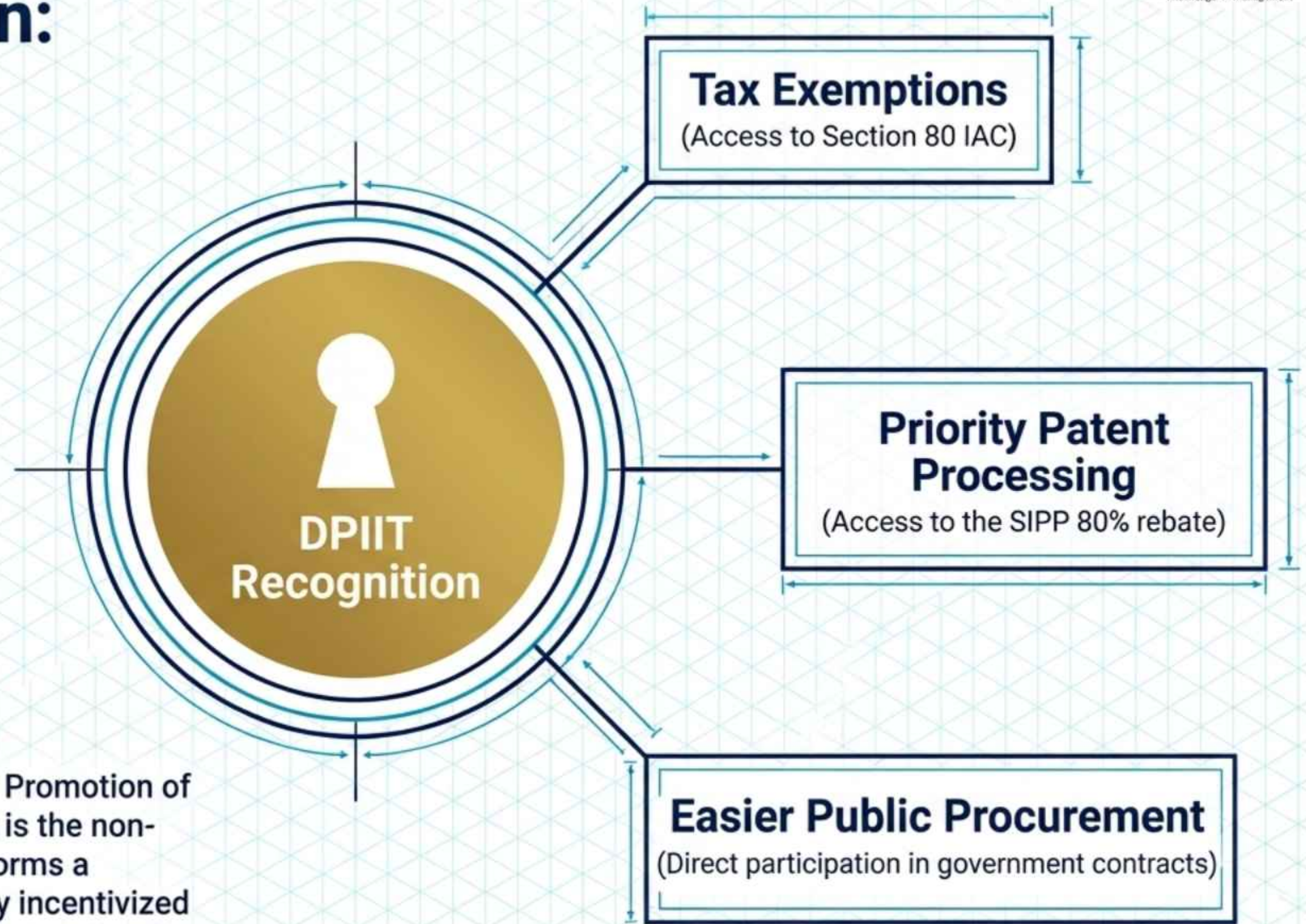
Direct access to the Fund of Funds for Startups (FFS) and the Startup India Seed Fund Scheme (SISFS) for commercialization.



Agile Exit Strategy

Fast-tracked insolvency pathway allowing startups with simple debt structures to wind up within 90 days.

DPIIT Recognition: The Golden Key to Optimization



Recognition by the Department for Promotion of Industry and Internal Trade (DPIIT) is the non-negotiable prerequisite that transforms a standard foreign entity into a highly incentivized innovation hub.

Navigating the Pitfalls of Market Entry

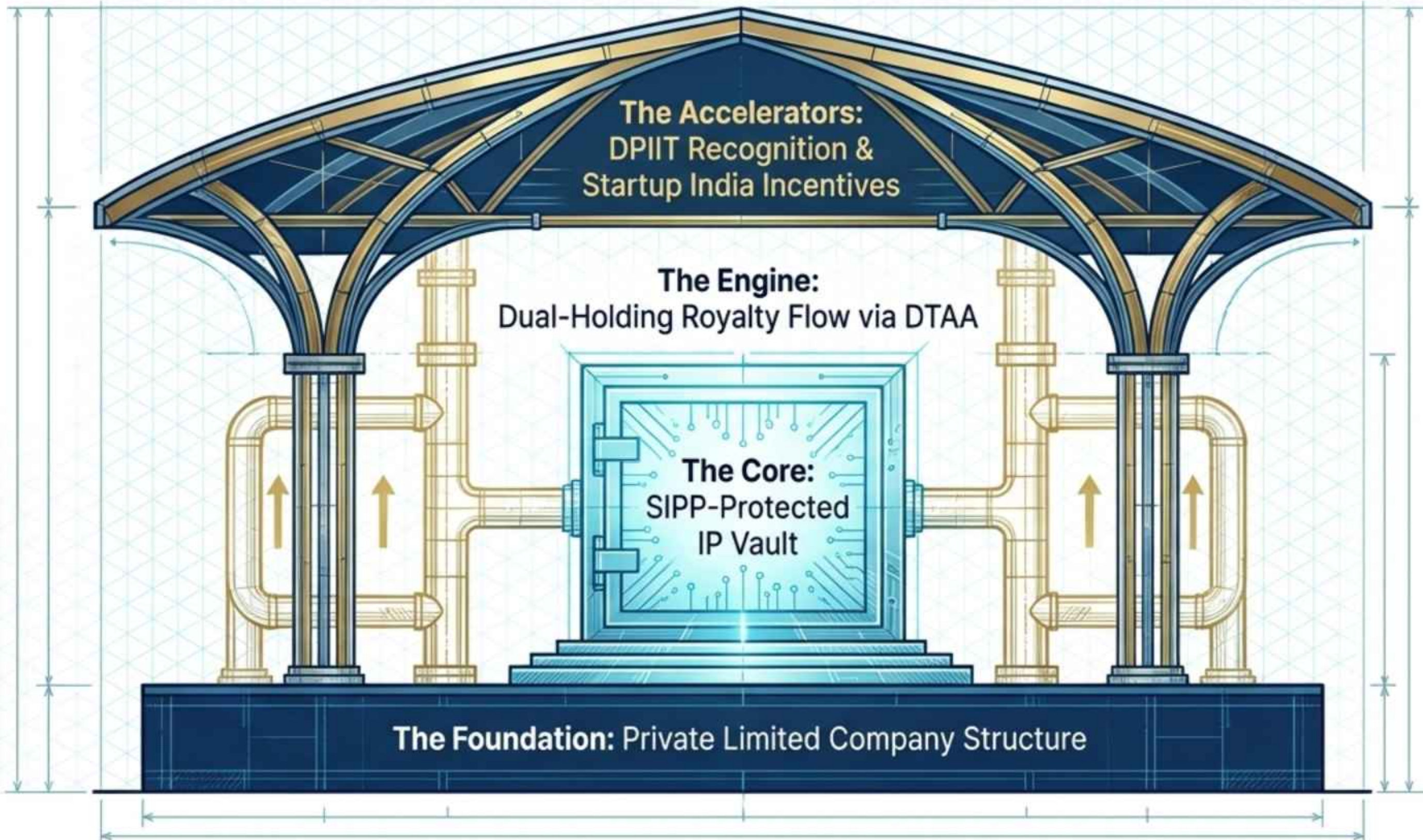
Challenges

- ✘ Regulatory Complexity & Misinterpretation.
- ✘ Incomplete Documentation delaying MCA approval.
- ✘ Strict Foreign Direct Investment (FDI) Caps.
- ✘ Cultural Adjustments & Logistics.

Solutions

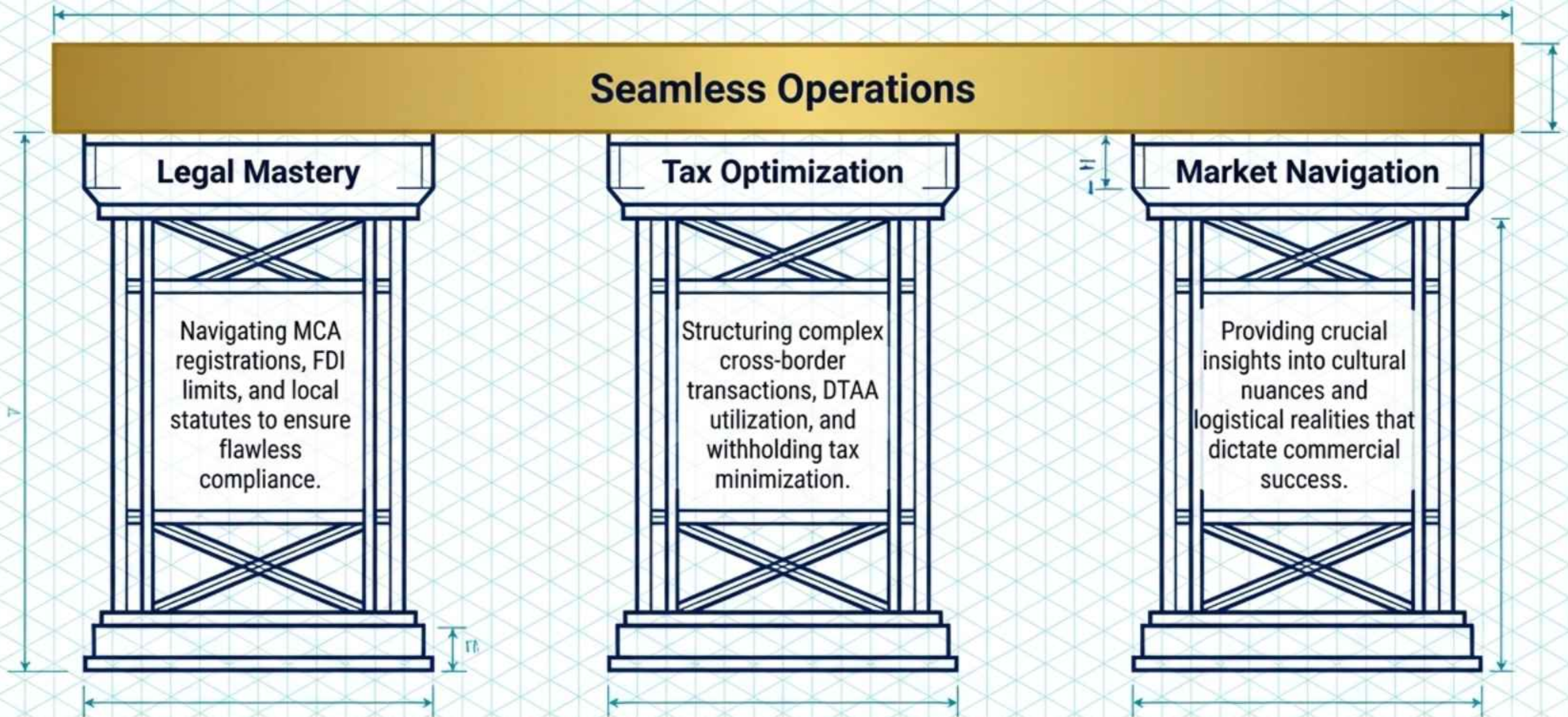
- ✓ Engaging Local Legal Counsel for FDI compliance.
- ✓ Rigorous pre-filing SPICe+ audits.
- ✓ Tailored Market Strategies guided by local consultants.

Synthesis: The Optimized Enterprise Model



Key Insight: Maximum profitability in the Indian market cannot be achieved through piecemeal legal work. Corporate structure, IP law, and cross-border tax strategy must be engineered simultaneously from day one.

The Role of the Professional Advisor



About KNM Management Advisory Services

KNM Management Advisory Services Pvt. Ltd. provides specialized, high-level structural guidance for foreign enterprises entering the Indian market.

Combining deep local regulatory mastery with sophisticated cross-border tax expertise, we engineer optimized business structures that safeguard assets, ensure compliance, and maximize repatriated profits.



Execute Your Entry Strategy

Connect with our experts today to **construct your optimized market entry blueprint.**



www.knmindia.com



services@knmindia.com



Tokyo Office: +81-3-6869-0850



India Offices: +91-124-4295170 | +91-99105-04170